

## CHAM-24 Touch dimmer

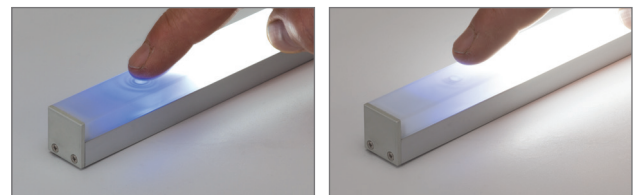
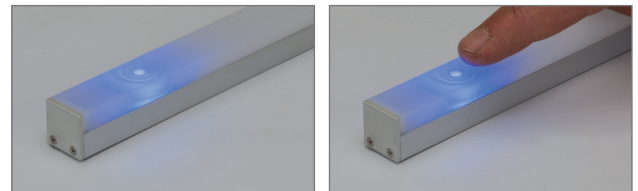
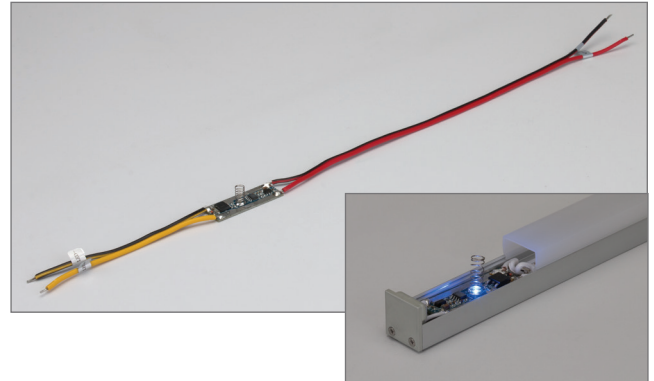


RoHS

### Description

The CHAMELEON-24 is a unique product in which a “Touch dimmer” is installed into a LED linear profile. The “Touch dimmer” has been specifically designed to suit the Domus range of mounting profiles. Once integrated into the LED Aluminium profile the only way you know something is installed is by the “Blue” glow emitted by the integral LED. The purpose of the “Blue” indicator light is to guide the owner to the point in which to turn the light on is by a simple soft touch to the diffuser. Once the owner has touched the diffuser the LED strip lighting will slowly ramp up to 100% unless a dimming level has been pre-set. In this case the LED will return to its last dimming level. A simple extended touch on the diffuser at the “Blue” light point will start to ramp up or down until the finger has been removed from the diffuser.

The “Touch dimmer” make a very useful addition for Kitchen under cardboard lighting, furniture and even office lighting.



Order Code: 20133  
Product Code: CHAM-24  
Description: 1CH Touch dimmer

### Specification Features

Type of interface:	1ch dim controller
Method of control:	Touch dimmer*
Method of dimming:	PWM (Pulse width modulation)
Housing colour:	Not applicable
Housing size (mm):	Not applicable
Input voltage (VDC):	12-24VDC
Output voltage (VDC):	12-24VDC
Output current (A):	1 x 6A
Output wattage (W):	12VDC- 72W (x1) 24VDC- 144W (x1)
Expandable signal:	Not applicable
Requires:	Constant voltage 12-24VDC LED driver **
Compatible mounting profiles:	OPTI-LINE-SM, BOBBY-BLOC and BOBBY-CURVE***

\* Touch dimmer is only suited for particular Domus LED mounting profiles. The touch dimmer must be assembled in the Domus factory in the selected profile at the point of ordering.

\*\* Constant voltage LED driver required (not included) product dependant.

\*\*\* LED mounting profile needed (not included) compatible LED mounting profiles include the OPTI-LINE-SM, BOBBY-BLOC and BOBBY-CURVE.

### Diagrams / Additional

